

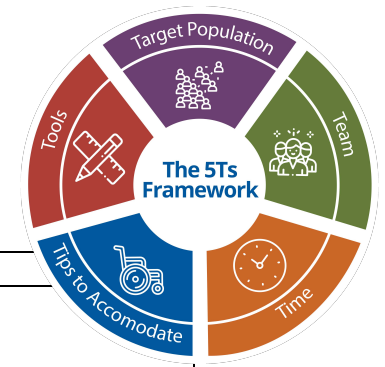
5Ts Framework: Inclusion Worksheet

Study name:

Study purpose:

Study design:

Study inclusion and exclusion criteria:



5T	Questions	Answers	Plan
Target Population	<p>What this the “target” population (i.e., results will be generalizable to ____)?</p> <p>What type of <i>limitations</i> (sensory, functional, cognitive, etc.) or <i>chronic conditions</i> may this population have? How common are they?</p> <p>What are some common <i>motivations</i> for or <i>concerns</i> about participating in research in this population?</p>		
Team	<p>What team members will be interacting with older adults? What training do they need?</p> <p>Who else should be include on our “team”? (E.g., topic experts, Participants/family, Providers)</p>		
Time	<p>What time constraints should be considered when scheduling study tasks or visits?</p> <p>How long will the study visits last? What if a participant has limitations?</p> <p>How long do individual measures take?</p>		
Tips to Accommodate	<p>How, when, where, and what are participants asked to do?</p> <p>How would limitations affect each study step?</p>		
Tools	<p>What challenges will we face recruiting older adults?</p> <p>What demographics and functional measures should we track during enrollment?</p> <p>What challenges will we face with data collection?</p> <p>How are we measuring outcomes that are important to the target population?</p>		